

Bangs Canyon



► Overview

Surrounded by Jurassic and Triassic sandstone, this chunk of Early Proterozoic pegmatite, schist, and gneiss provides the Grand Junction area with a small sport crag. While the rock isn't perfect, the holds and movement tend to be engaging and unique.

► Season



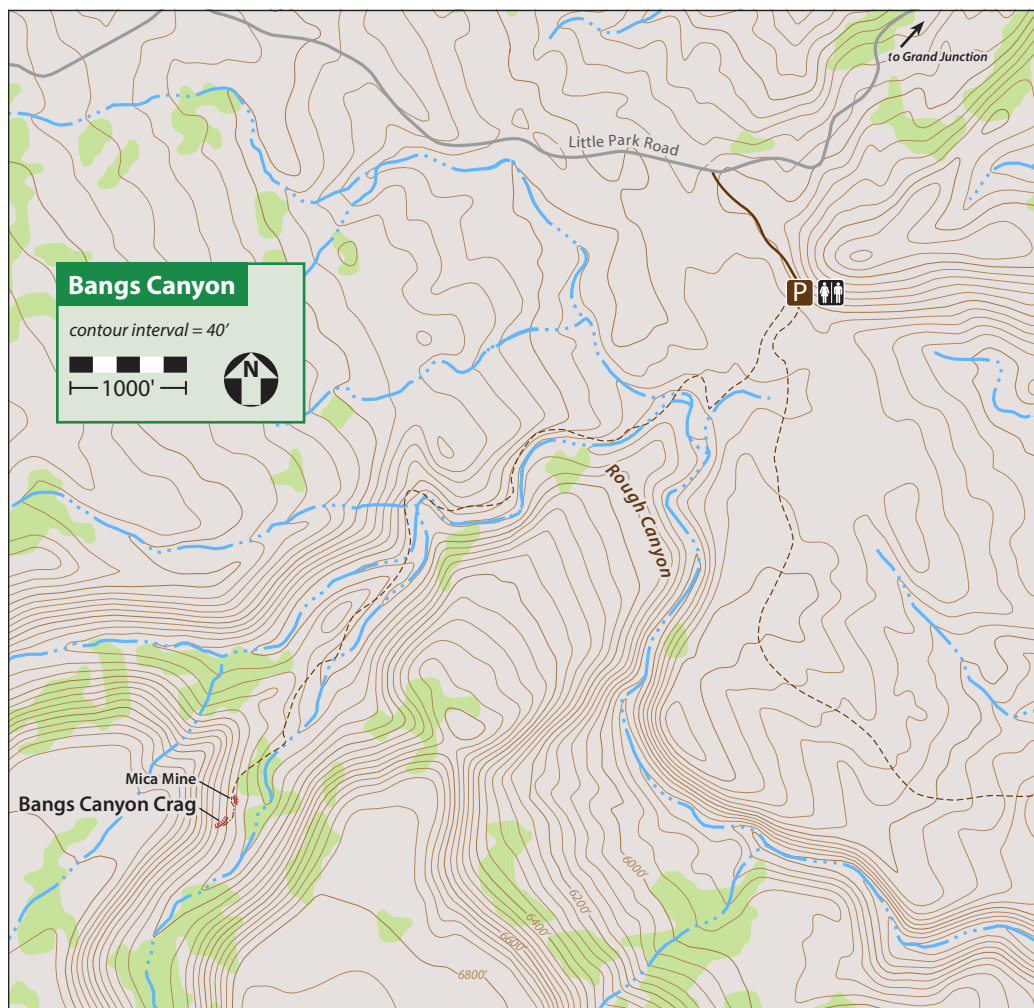
Spring to fall generally offer the best times to climb. With a sunny aspect, warm days may prove too warm but cold days (below 40°F) may prove too cold.

► Directions

From Grand Junction, take Hwy 340 (Broadway) west. After crossing the Colorado River, take

the first left at a traffic light onto Monument Road. After 0.2 miles turn left onto D road, which after 0.3 miles veers right and becomes Rosevale Road. Follow Rosevale Road for 0.9 miles to a right onto Little Park Road. Continue 5.3 miles on Little Park Road to a large, dirt BLM parking area on the left (38.988950°, -108.617280°).

On foot, head southwest on a trail that follows a blasted track into Rough Canyon (0.2 miles). Head right (north) up canyon on a well-established trail toward a Mica Mine (a 70' cave of quartz). The crag is about 90 yards past the mine (38.978061°, -108.632487°). Total distance is 1.4 miles, about 3 minutes of walking.



Bangs Canyon



1	project	Bolts to LO.	undone
2	Choss Master	Bolts to LO.	5.11a
3	Bang and Blame	★★ Bolts to LO.	5.12b
4	Big Bang	★★ 9 bolts to LO.	5.13c

5	Pumping Jesus	★ Bolts to LO.	5.12d
6	Baby Bang	★ Bolts to LO.	5.10c
7	She Bangs	★★ Bolts to LO.	5.11d
8	Big Fat Weiners	★ Bolts to LO.	5.12a

9	Liquid Charcoal	★★★ Bolts to LO.	5.13a
10	project	undone	
11	★ Bolts to LO.	5.13b	